

NOTE: THIS DRAWING SUPERSEDES PS1-MDG-XX-00-DR-D-64028

REV	DESCRIPTION	BY	RE	AP	DATE
K	LOCATION OF S-SWIC14 ADJUSTED	AGS	FAZ	FAZ	18.11.15
J	GULLIES ADDED TO REINTRODUCED ROADS, BUILDINGS 2.13, 2.18, 2.19 & 2.20 MOVED & DRAINAGE UPDATED. BUND DRAINAGE UPDATED.	AGS	FAZ	FAZ	17.11.15
I	SPACIO DRAINAGE AND ACO CHANNELS ADDED	AGS	FAZ	FAZ	23.10.15
H	BASIN 2 SPILLWAY ADDED	AGS	FAZ	FAZ	02.09.15
G	LOCATION OF SWIC06 AMENDED	AGS	FAZ	FAZ	14.08.15
F	OUTFALL ROUTE FROM BASIN 2 AMENDED	AGS	FAZ	FAZ	04.08.15
E	GULLY AMENDMENTS, CONNECTIONS UPDATED, GULLIES REMOVED ON OMITTED ROADS	AGS	FAZ	FAZ	23.06.15
D	GULLIES ON ROUNDABOUT RELOCATED & COORDINATES UPDATED. LIFT CHAMBER PUMPS REMOVED. SWMH20.9 RELOCATED. SWMH20.10 DELETED. SWIC38 AND SWIC39 DELETED	AGS	FAZ	FAZ	04.06.15
C	AMENDED GULLY LOCATIONS HIGHLIGHTED	AGS	FAZ	FAZ	22.05.15
B	GULLY LOCATIONS AMENDED AND COORDINATES UPDATED	AGS	FAZ	FAZ	21.05.15
A	MODIFICATIONS TO DRAINAGE LAYOUT FOR WHOLE SITE & GULLIES ADDED	EW	AGS	FAZ	11.05.15

DRAWN BY	EW	DATE	29.04.2015
REVIEWED BY	AGS	SCALE	1:1250
AUTHORISED BY	FAZ	ISSUE	P
		REVISION	K
DRAWING NUMBER <b>2241.PS.D.01</b>			

Gully Location Co-ordinates

Reference	Easting	Northing	Type
PSG001	501890.034	184625.037	Single
PSG002	501874.854	184606.669	Single
PSG101	501908.669	184622.624	Single
PSG102	501899.783	184630.081	Single
PSG103	501951.553	184715.432	Single
PSG104	501946.526	184717.957	Single
PSG105	501977.015	184765.784	Single
PSG106	501971.995	184768.322	Single
PSG107	501997.054	184805.431	Single
PSG108	501992.040	184807.967	Single
PSG109	502008.362	184833.257	Single
PSG110	502001.447	184834.809	Single
PSG116	501887.452	184944.746	Double
PSG201	501914.317	184598.911	Single
PSG202	501917.659	184605.578	Single
PDG203	501961.432	184576.817	Double
PDG204	501963.624	184582.068	Double
PSG301	501971.742	184566.732	Single
PSG302	501977.031	184565.478	Single
PSG309	502143.181	184539.416	Single
PSG310	502134.118	184540.372	Single
PSG311	502137.704	184585.812	Single
PSG312	502131.173	184585.690	Single
PSG313	502132.111	184680.156	Single
PSG314	502129.232	184674.142	Single
PSG315	502082.890	184705.040	Single
PSG316	502080.351	184700.021	Single
PDG317	502037.219	184728.046	Double
PDG318	502034.718	184723.129	Double
PDG318	502035.935	184722.510	Double
PSG319	501991.622	184751.183	Single
PSG320	501989.083	184746.163	Single
PSG401	501989.841	184586.485	Single
PSG402	501984.404	184587.222	Single
PSG404	502019.476	184662.094	Single
PSG405	502049.140	184706.306	Single
PSG406	502044.121	184716.844	Single
PSG408	502024.496	184659.556	Single
PDG444	502047.580	184588.362	Double
PDG445	502049.012	184582.830	Double
PSG501	501908.711	184857.608	Single
PSG502	501911.250	184862.628	Single
PSG503	501959.607	184831.871	Single
PSG504	501962.144	184836.892	Single
PSG505	501986.035	184818.470	Single
PSG506	501991.232	184822.171	Single
PSG701	501848.621	184879.987	Single
PSG702	501843.682	184882.540	Single
PSG703	501875.573	184931.990	Single
PSG704	501670.641	184934.516	Single
PSG801	501815.386	184822.174	Single
PSG803	501911.290	184773.703	Single
PSG804	501913.829	184778.722	Single
PDG805	501957.112	184750.347	Double
PSG806	501956.452	184757.112	Single
PSG202A	501852.766	184557.908	Single
PSG202B	501854.955	184581.929	Single
PSG202C	501844.574	184565.330	Single
PSG202D	501889.951	184597.937	Single
PSG311A	502139.314	184609.092	Single
PSG312A	502132.948	184610.084	Single
PDG444A	502111.116	184600.305	Double
PDG445A	502112.108	184594.828	Double
PSG701A	501859.978	184888.555	Single
PSG702A	501857.563	184883.583	Single

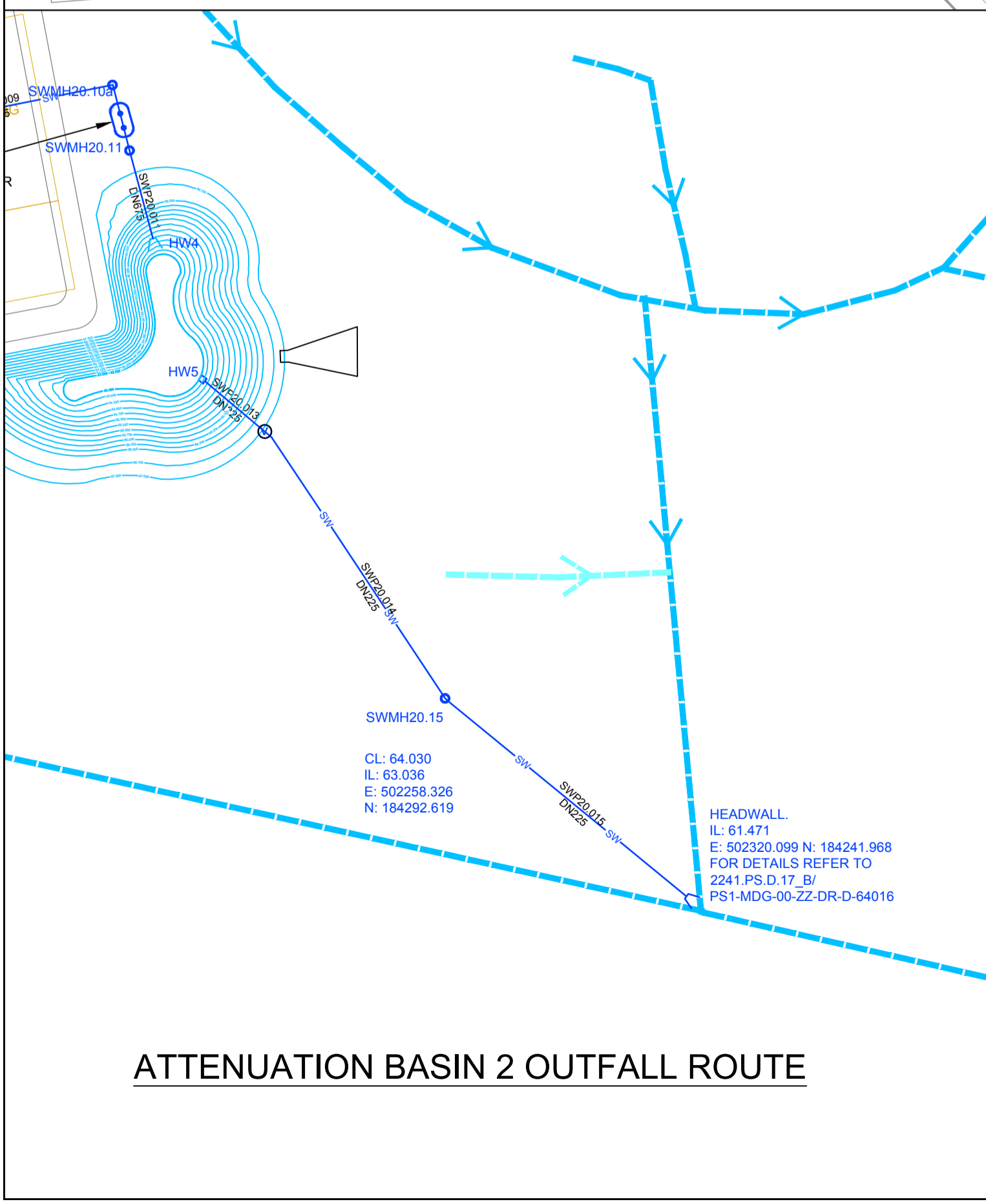
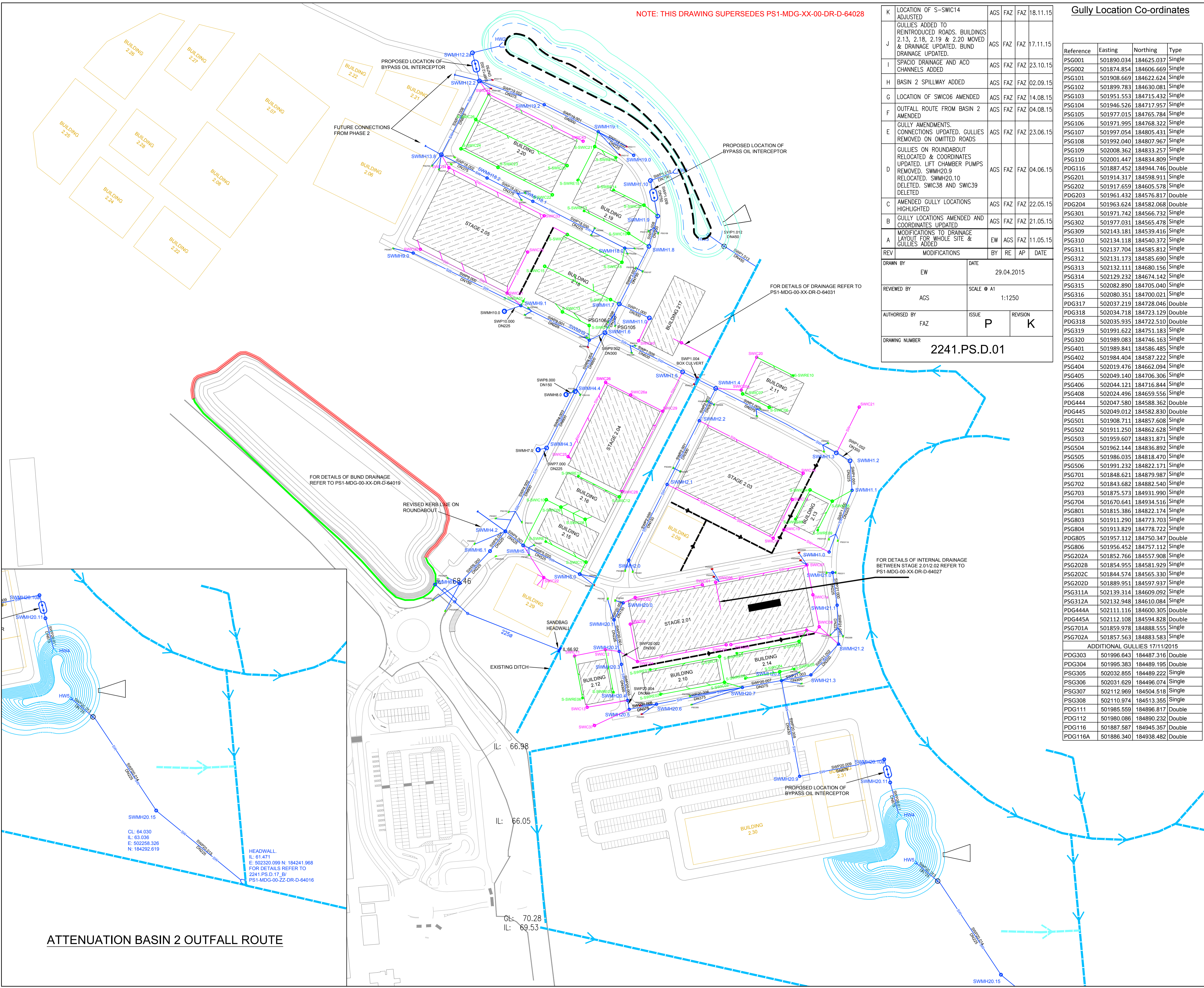
  

ADDITIONAL GULLIES 17/11/2015			
PDG303	501996.643	184487.316	Double
PDG304	501995.383	184489.195	Double
PSG305	502032.855	184489.222	Single
PSG306	502031.859	184496.074	Single
PSG307	502112.969	184504.518	Single
PSG308	502110.974	184513.355	Single
PDG111	501985.559	184896.817	Double
PDG112	501980.086	184890.232	Double
PDG116	501887.587	184945.357	Double
PDG116A	501886.340	184938.482	Double

NOTES:

- All levels are given in metres above Ordnance Datum (mAOD).
- All pipe dimensions are in millimetres unless otherwise stated.
- Unless otherwise indicated, all construction details shall comply with Sewers for Adoption - 7th Edition.
- ACO F900 with compatible silt trap at 50m intervals and compatible junction units.

- Key:
- Full Site Boundary
  - Proposed SW Gravity Drain
  - Proposed SW Filter Drain
  - Existing SW Ditch
  - Proposed SW Manhole
  - Proposed SW Flow Control Manhole
  - Proposed Plot Drainage
  - Proposed Plot Drainage Manhole
  - Proposed Single Gully
  - Proposed Double Gully
  - Proposed SPACIO Drainage
  - Proposed Spacing Eye (SPACIO)
  - Proposed Shallow Access (SPACIO)
  - ACO F900 Channels



REV	DATE	DESCRIPTION	BY	CHK	APR
C11	18.11.15	LOCATION OF S-SWIC14 ADJUSTED	JSR	AD	NL
C10	18.11.15	GULLIES ADDED TO REINTRODUCED ROADS, BUILDINGS 2.13, 2.18, 2.19 & 2.20 MOVED & DRAINAGE UPDATED. BUND DRAINAGE UPDATED.	JSR	AD	NL
C09	23.10.15	ACO CHANNELS ADDED	TDA	AD	NL
C08	19.10.15	SPACIO DRAINAGE ADDED	TDA	AD	NL
C07	03.09.15	SPILLWAY TO POND 2 ADDED	DR	AD	NL
C06	14.08.15	LOCATION OF SW1C06 AMENDED	CM	AD	NL
C05	04.08.15	REVISED OUTFALL FROM POND 2	TDA	AD	RFF
C04	25.06.15	OMISSION OF GULLIES	SH	AD	MA
C03	05.06.15	LOCATIONS OF SWMH 20.9 AND 20.10A RE-LOCATED	JSR	AD	DB
C02	22.05.15	AMENDED GULLY LOCATIONS	CM	AD	RFF
C01	15.05.15	ISSUED FOR CONSTRUCTION	CM	AD	RFF

**FOR CONSTRUCTION**

**Sir Robert McAlpine Design Group**

Sir Robert McAlpine Ltd  
Eden Court  
Maylands Avenue  
Hemel Hempstead  
Herts HP2 7JK  
Tel: +44 (0)1442 235444

www.sir-robert-mcalpine.com

This Drawing Is The Property Of Sir Robert McAlpine Ltd And No Reproduction Thereof May Be Made In Whole Or In Part Without Permission

Project: **IVER HEATH, PINWOOD STUDIOS (Phase 1)**

Drawing Title: **PROPOSED SURFACE WATER DRAINAGE LAYOUT**

Project No	Sheet	Scale	Revision:
61638	A1	1:1250	<b>C11</b>
Project Name-Originator-Volume-Level-Type-Role-Number			
<b>PS1-MDG-00-XX-DR-D-64000</b>			